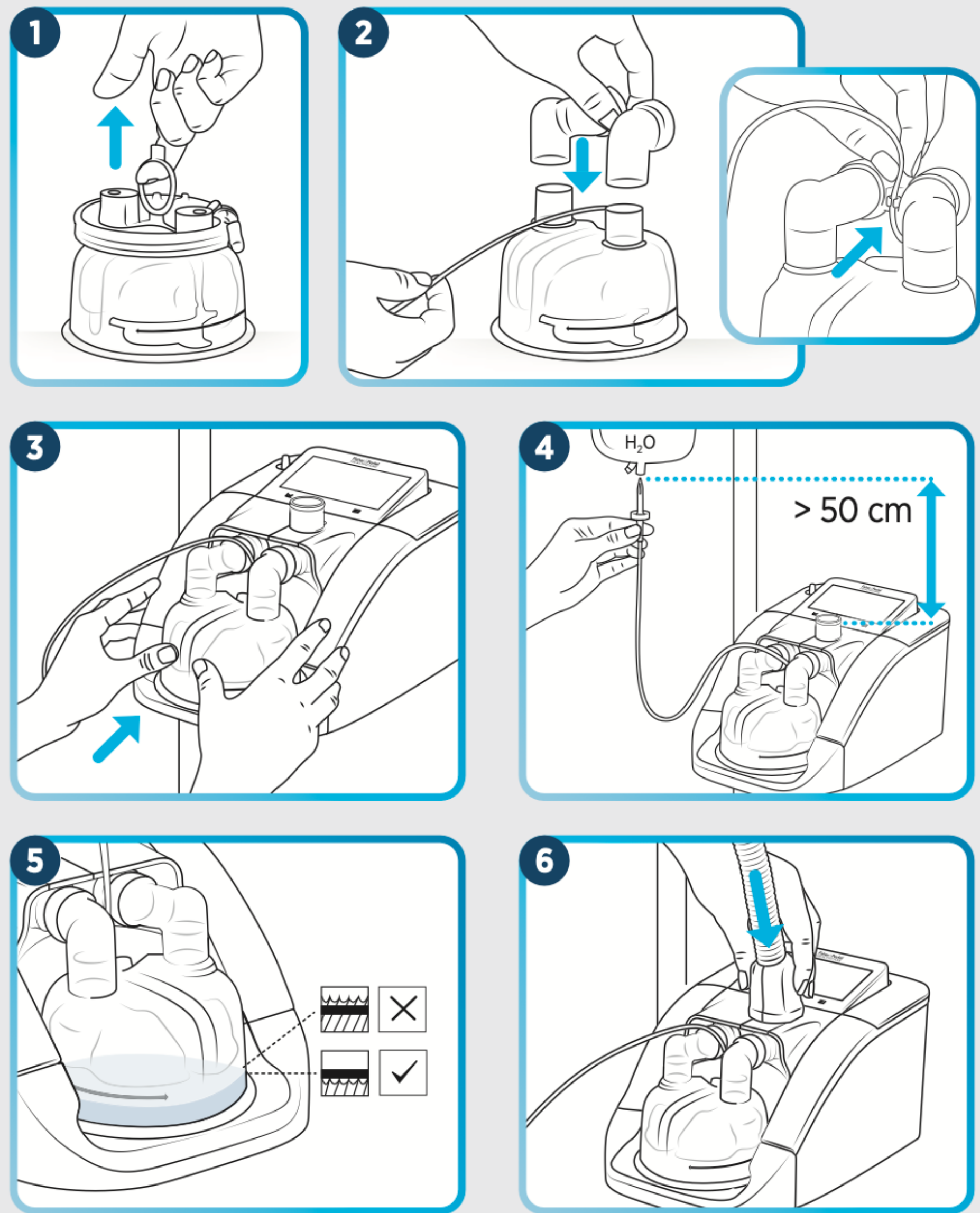
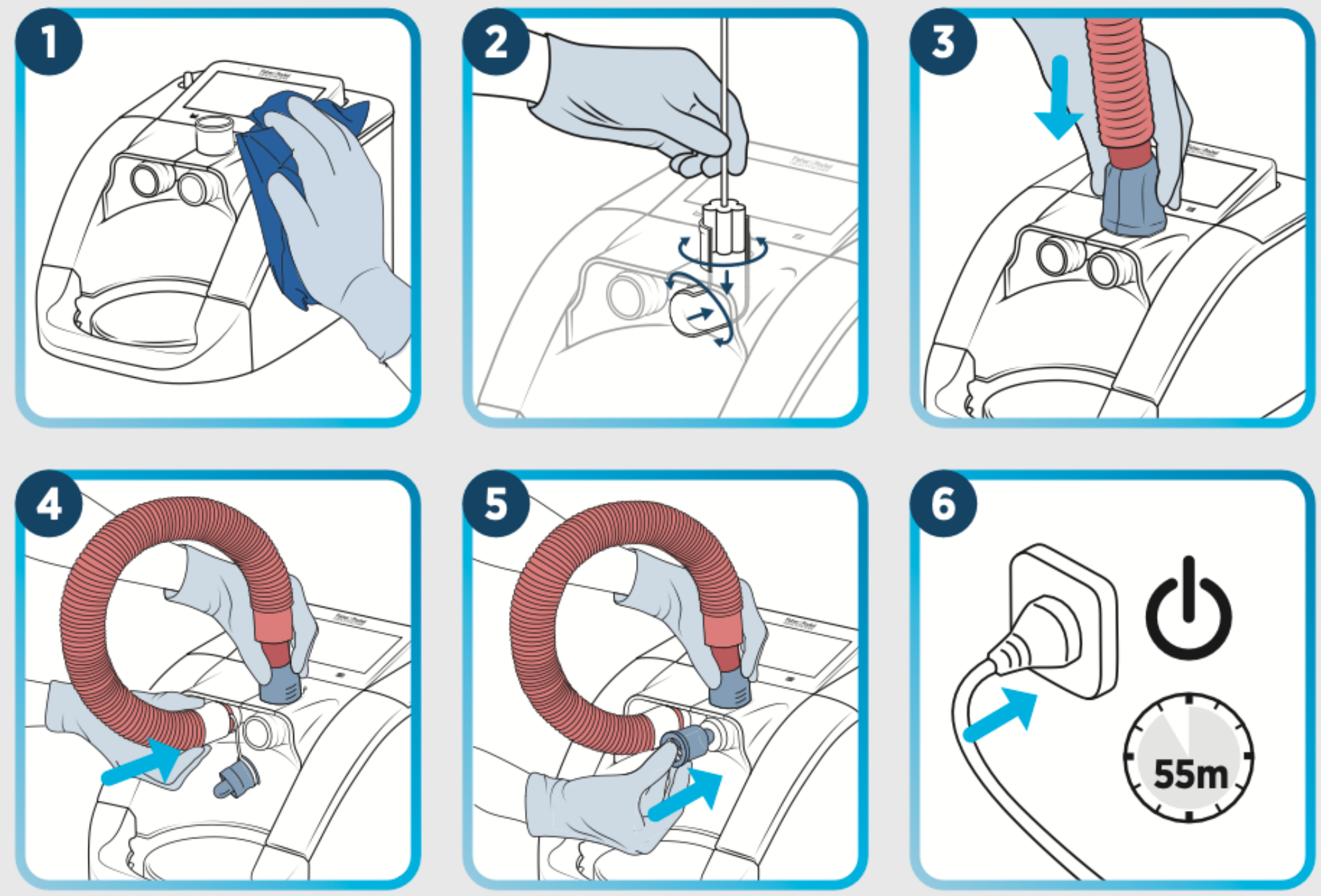


Setup



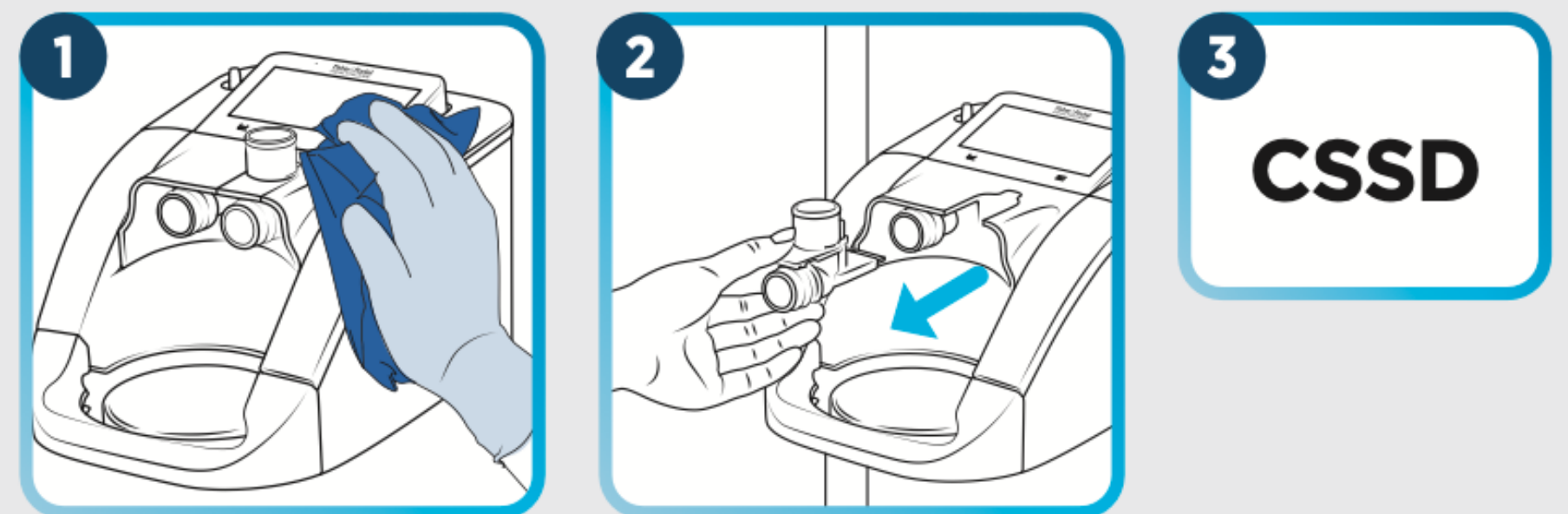
Cleaning and disinfection

Option 1: Disinfection Kit



Option 2: Washer Disinfector

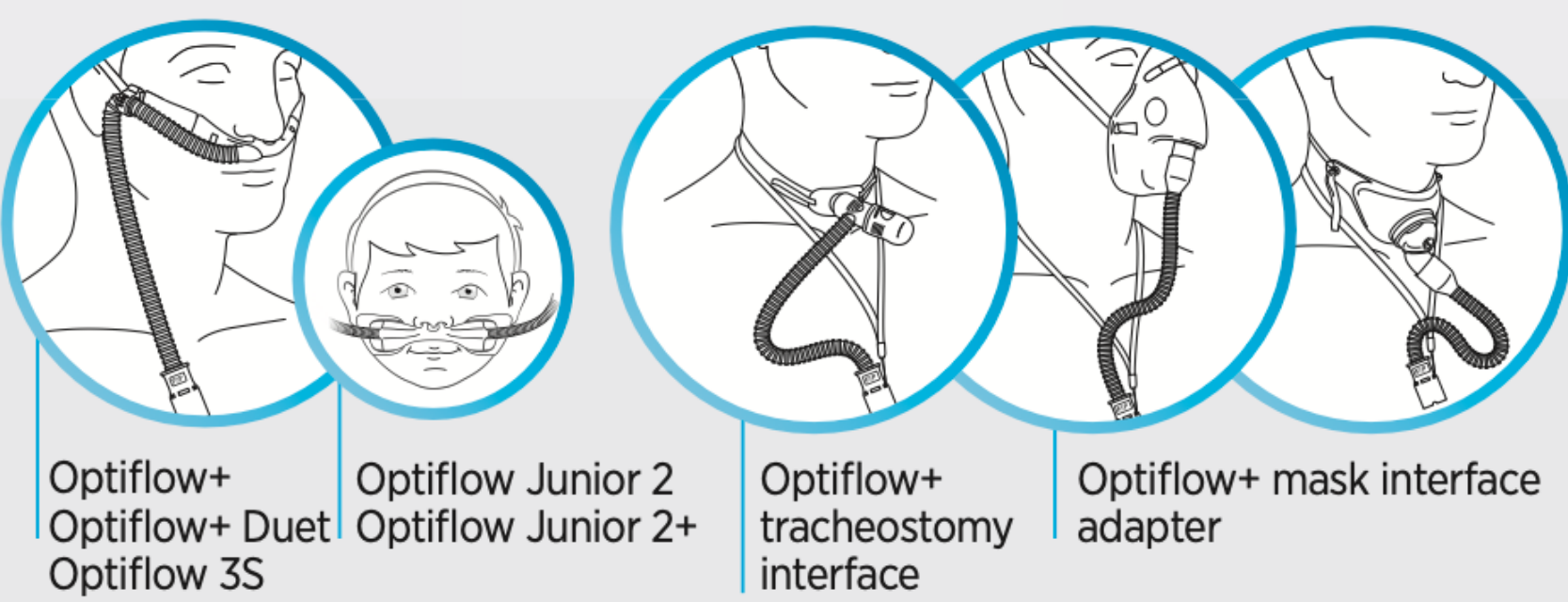
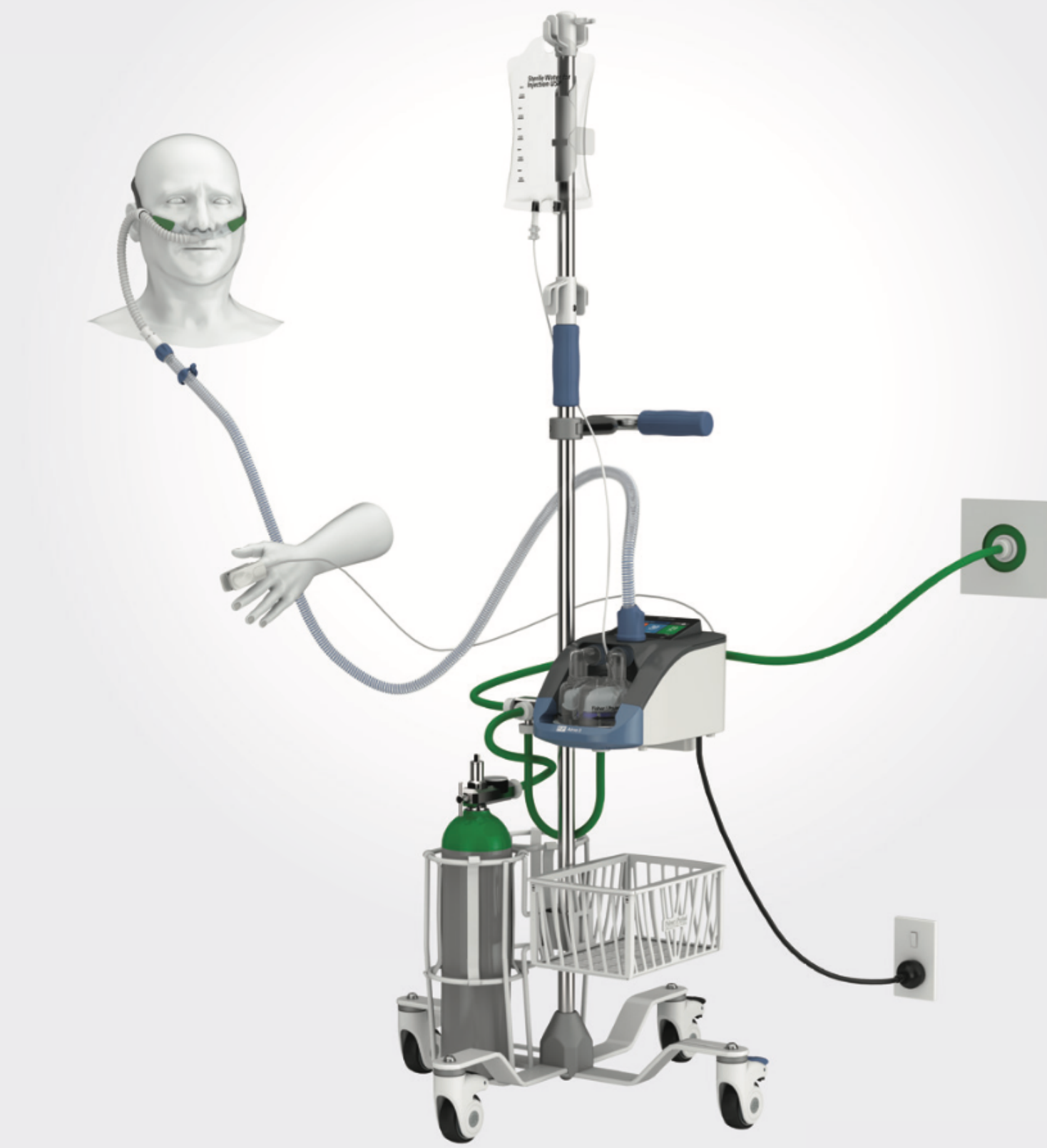
Elbow disinfected by hospital central sterile services department (CSSD)



Refer to the complete user instructions for F&P Airvo 3.

Fisher & Paykel
HEALTHCARE

Optiflow™ high flow therapy setup



Available target settings

PATIENT INTERFACE			L/min																	
			2	3	4	5	6	7	8	9	10	15	20	25	...	50	55	60	65	70
Optiflow Junior 2	OJR414 M	★	2					7												
	OJR416 L	★	2											20						
	OJR418 XL	★	2												25					
	OJR520 XXL	★											10					50		
Optiflow Interfaces	OPT942/OPT962/OPT1042 (S)																		60	
	OPT944/OPT964/OPT1044 (M)																			70
	OPT946/OPT966/OPT1046 (L)																			70
Trache	OPT970																		60	
Mask Adaptor	OPT980																		60	

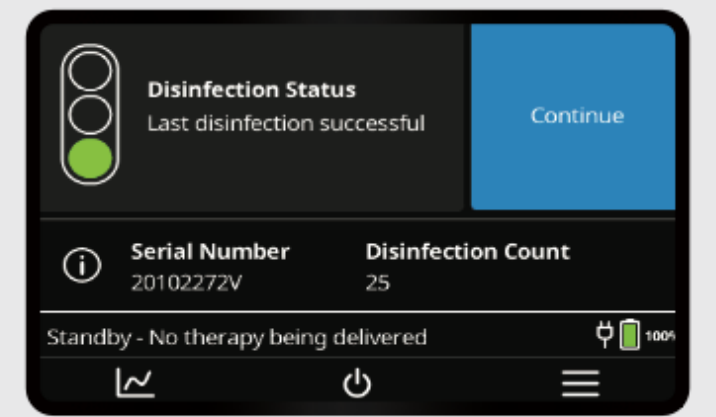
Some accessories may not be available in certain countries. Contact your Fisher & Paykel representative for the latest information on patient interfaces available for the Airvo 3.

Start Optiflow high flow therapy

Review disinfection state



If using disinfection kit and/or outlet elbow reprocessing

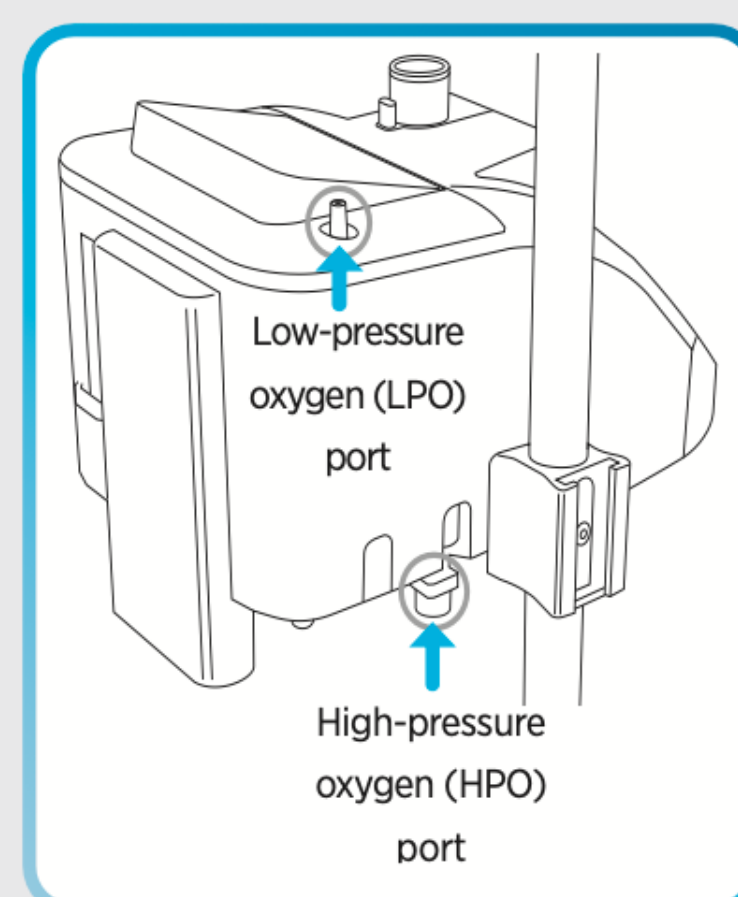
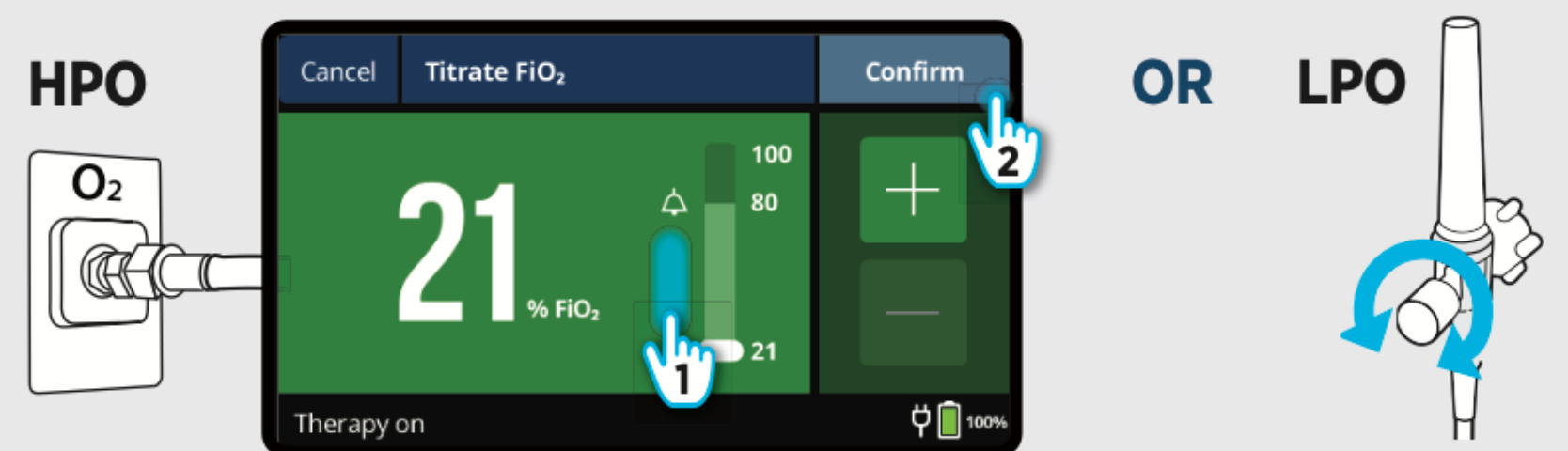


If using disinfection kit only

Configure therapy settings



Additional O₂ if required



F&P Airvo 3